

## R-C Thermal Model Parameters

### DESCRIPTION

The parametric values in the R-C thermal model have been derived using curve-fitting techniques. R-C values for the electrical circuit in the Foster/tank and Cauer/filter configurations are included. When implemented in P-SPICE, these values have matching characteristic curves to the single-pulse transient thermal impedance curves for the MOSFET.

These RC values can be used in the P-SPICE simulation to evaluate the thermal behavior of the MOSFET junction temperature under a defined power profile. These techniques are described in application note AN609, "Thermal Simulation of Power MOSFETs on the P-SPICE Platform".

### R-C THERMAL MODEL FOR TANK CONFIGURATION



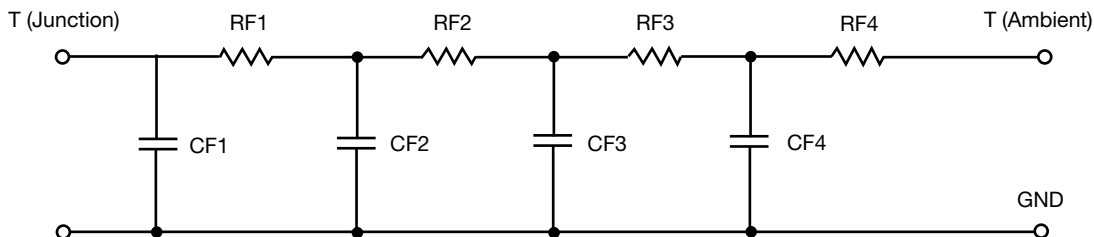
R-C VALUES FOR TANK CONFIGURATION			
THERMAL RESISTANCE (°C/W)			
Junction to	Ambient	Case	Foot
RT1	N/A	261.2581 m	N/A
RT2	N/A	230.4095 m	N/A
RT3	N/A	123.0816 m	N/A
RT4	N/A	35.2508 m	N/A
THERMAL CAPACITANCE (Joules/°C)			
Junction to	Ambient	Case	Foot
CT1	N/A	394.4490 m	N/A
CT2	N/A	96.7011 m	N/A
CT3	N/A	22.7676 m	N/A
CT4	N/A	3.3547 m	N/A

#### Note

- N/A indicates not applicable

*This document is intended as a SPICE modeling guideline and does not constitute a commercial product datasheet. Designers should refer to the appropriate datasheet of the same number for guaranteed specification limits.*

## R-C THERMAL MODEL FOR FILTER CONFIGURATION



R-C VALUES FOR FILTER CONFIGURATION			
THERMAL RESISTANCE (°C/W)			
Junction to	Ambient	Case	Foot
RF1	N/A	96.7666 m	N/A
RF2	N/A	231.0497 m	N/A
RF3	N/A	211.5489 m	N/A
RF4	N/A	110.6348 m	N/A
THERMAL CAPACITANCE (Joules/°C)			
Junction to	Ambient	Case	Foot
CF1	N/A	4.9753 m	N/A
CF2	N/A	29.9548 m	N/A
CF3	N/A	105.4500 m	N/A
CF4	N/A	1.0394	N/A

**Note**

- N/A indicates not applicable

